



# HAIRPIN

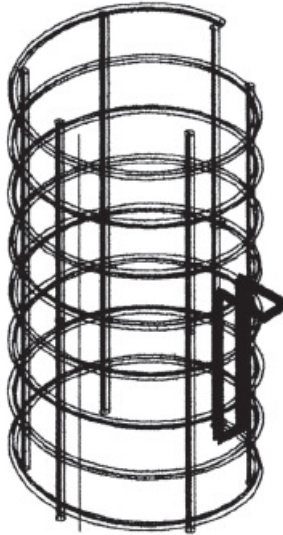
## SHAFTSPACER EXTENDER

## Installation Instructions

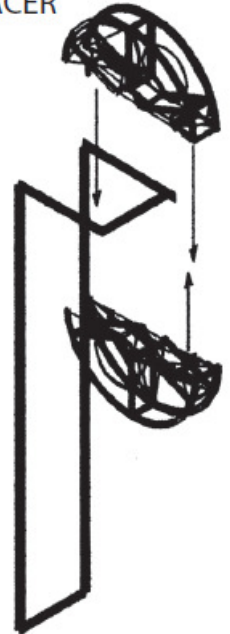
STEP 1:  
THE BASIC  
OFFSET HAIRPIN



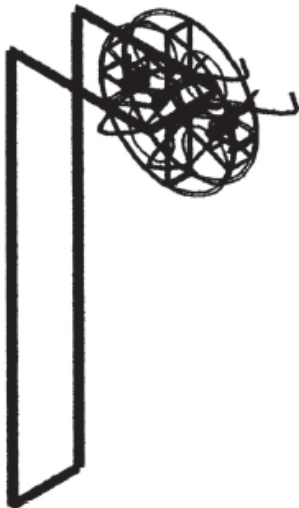
STEP 2:  
WIRE HAIRPIN TO CAGE



STEP 3: ASSEMBLE  
SHAFTSPACER



STEP 4: DOUBLE WIRE HALVES  
OF SHAFTSPACER - 16 GAUGE TIE WIRE



STEP 5: MULTIPLE  
ASSEMBLY COMPLETED

