

Project References

SONTEC
The CSL Tube™

The only steel pipe system
specifically designed for
Crosshole Sonic Logging
(CSL) testing

Photo Courtesy of Malcolm Drilling Company

**Foundation
Technologies, Inc.®**
FAMILY OF BRANDS

www.foundationtechnologies.com



About SONITEC

Sonitec, utilizing its unique Push-Fit technology is the only steel pipe system specifically designed and manufactured for Crosshole Sonic Logging (CSL) testing. Since the late 1990's over 50,000,000 linear feet of Sonitec has been used on over 400+ projects around the world. A cost-effective and lightweight solution; Sonitec can reduce the labor needed for installation. The lightweight nature is also safer and easier to handle on the jobsite. The Sonitec tubes are made in America and inventory is readily available to ship where you need it, when you need it.



$\frac{1}{3}$ the weight



$\frac{1}{3}$ the manpower

COMPARED TO TRADITIONAL SCHEDULE 40 MATERIAL

Product Features

Sonitec are black steel tubes available with an enlarged end in a bell mouth shape. This Push-Fit method makes the connection between two tubes an easy process and minimizes labor costs.

Smart cold-forged manufacturing process:

- Rigid and robust tube connections, high resistance to shocks.
- Fully automated deformation with more precision and consistency.

Better sealing methods:

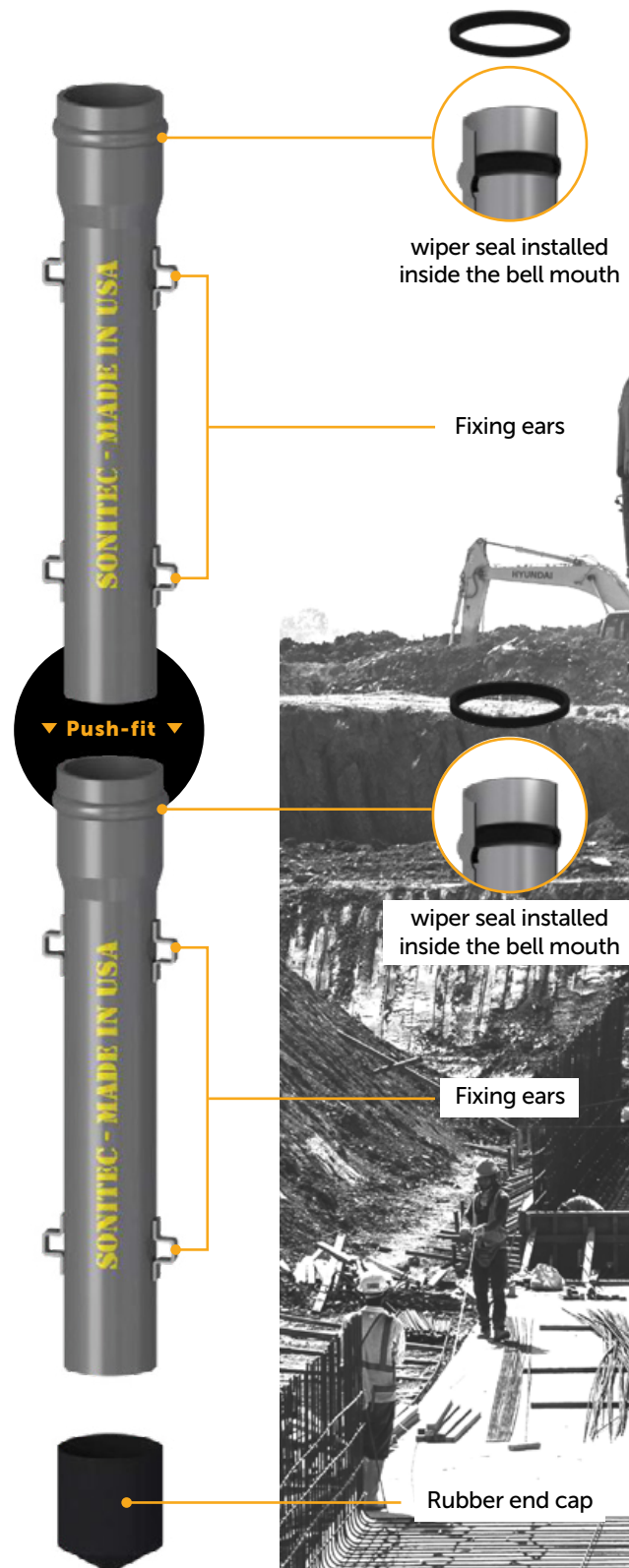
- Water and concrete tightness is maintained by a wiper seal.
- Wiper seal is installed inside the pipe and fully protected from UV and mishandling.
- Standard wiper seal is easy to replace (not glued).

Clear engagement for tube to tube connection:

- Fixing ears are used as physical and visual stopper.
- No sharp edges and much safer for the job operations.

Better end cap solution:

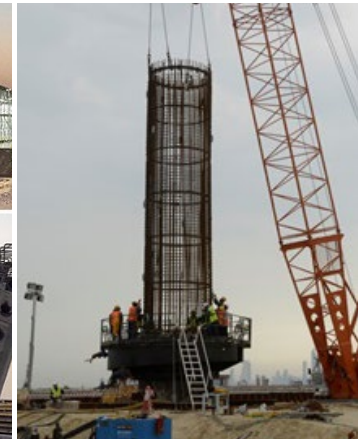
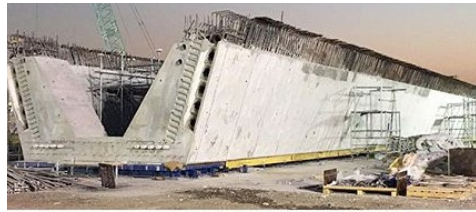
- Rubber end cap, designed with metallic insert, makes for quick and easy push-fit installation.
- High resistance to extreme temperature and UV.
- The cap performance is equivalent to tube to tube connections.



Doha Link

Sheikh Jaber Al-Ahmad Al-Sabah Causeway Project

12.4 km sea link / 7.7 km offshore



LOCATION:

Kuwait

OWNER:

Kuwait Ministry of Public Works

CONSULTANTS:

T.Y. Lin International, Dar Al-Handasah Consultants, SSH, SYSTRA

CONTRACTORS:

GS E&C Corporation

YEAR/DURATION:

2014-2017

PRODUCT (QTY):

Sonitec Tubes
300,000 linear meters

APPLICATIONS:

- Foundation piles, pile caps, superstructures
- 2.5m Diameter, 60 m deep caissons, 8 tubes per caisson

Main Causeway across the Kuwait Bay

Sheikh Jaber Al-Ahmad Al-Sabah Causeway Project

36 km sea link / 24 km offshore



LOCATION:

Kuwait

OWNER:

Kuwait Ministry of Public Works

CONSULTANTS:

T.Y. Lin International, Dar Al-Handasah Consultants, SSH, SYSTRA

CONTRACTORS:

Trevi (Piling), Hyundai E&C (Main Contractor)

YEAR/DURATION:

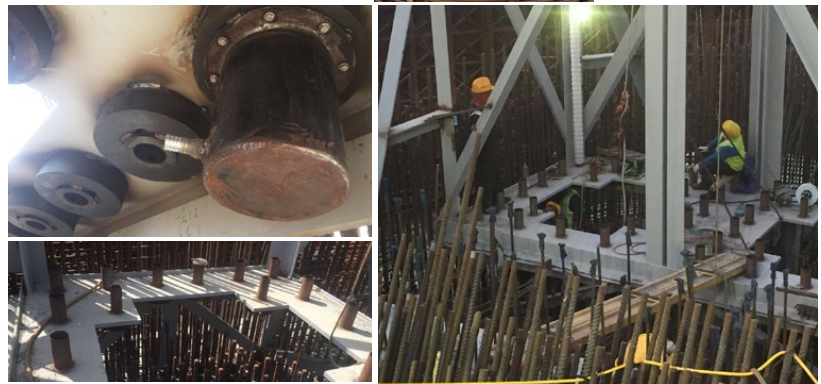
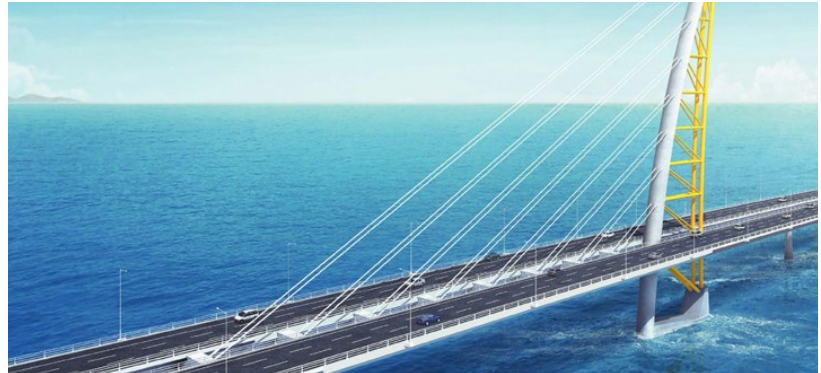
2014-2017

PRODUCT (QTY):

Sonitec Tubes
400,000 linear meters

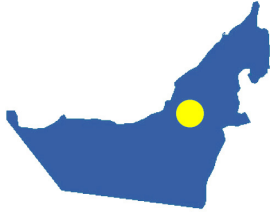
APPLICATIONS:

Sonitec for CSL concrete integrity checks of caissons for offshore segment



Abu Dhabi International Airport

Midfield Terminal Complex



LOCATION:

Abu Dhabi, UAE

OWNER:

Abu Dhabi Government

CONSULTANTS:

Kohn Pedersen Fox Associates
(KPF), ARUP

CONTRACTORS:

CSCEC, Jangho Group Company
Limited

YEAR/DURATION :

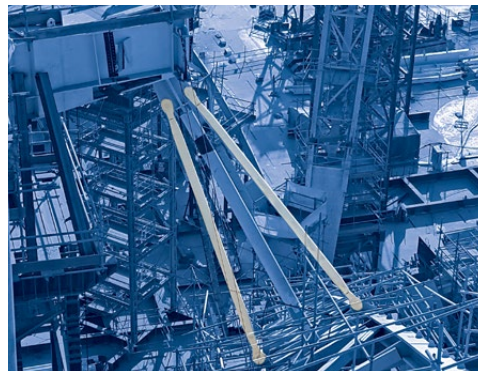
2013-2016

PRODUCT (QTY) :

Sonitec Tubes
700,000 linear meters

APPLICATIONS:

Caissons



**Creek Harbor Tower
Foundations and Raft**

**The World's Tallest Tower
1300m+**



LOCATION:

Ras Al Khor - Dubai - UAE

CONSULTANT:

Aurecon

CONTRACTORS:

Soletanche Bachy & Besix

YEAR/DURATION:

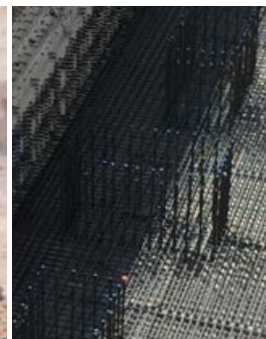
2016-2018

PRODUCT (QTY):

Sonitec Tubes
80,000 linear meters

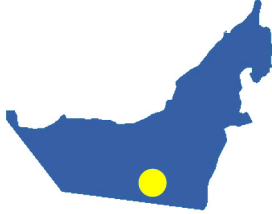
APPLICATIONS:

Foundations and raft



Dubai Metro Red line

Automated rail system



LOCATION:

Dubai, UAE

CONSULTANT:

Atkins (SNC Lavalin Group)

CONTRACTORS:

J T Metro (Obayashi Corporation),
Kajima, Yapi Merkezi

YEAR/DURATION:

2005-2010

PRODUCT (QTY):

Sonitec Tubes 60,000 linear meters

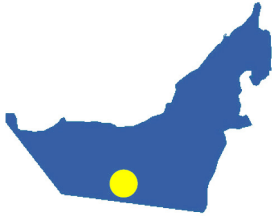
APPLICATIONS:

Diaphragm wall, caissons, diaphragm wall to slab, temporary openings, piers



Jumeirah Beach Residence

40 towers of 40 stories



LOCATION:

Dubai, UAE

CONSULTANTS:

MACE, Hyder (Arcadis), WS Atkins (SNC Lavalin Group), Arenco

CONTRACTORS:

Arabtec, Belhasa, Six Construct, Al Habtoor, Ahmadiyah

YEAR/DURATION:

2003-2005

PRODUCT (QTY):

Sonitec Tubes
70,000 linear meters

APPLICATIONS:

Raft, columns, core wall to beam connections



Pile trimming



Project Aerial View



Raft and Columns



Raft

Perth City Link



LOCATION:

Perth, Western Australia

CONSULTANTS:

PTA, MRA, NOMA

CONTRACTORS:

Perth City Link Rail Alliance (PTA, John Holland and GHD)

YEAR/DURATION:

2012-2014

PRODUCT (QTY):

Sonitec Tubes
1,160 linear meters

APPLICATIONS:

Diaphragm wall, cages prefabrication/assembly, mini-piles



Temburong Bridge

(30 km sea link)



LOCATION:

Brunei

CONSULTANT:

Arup HK

CONTRACTOR:

CSECEC

YEAR/DURATION:

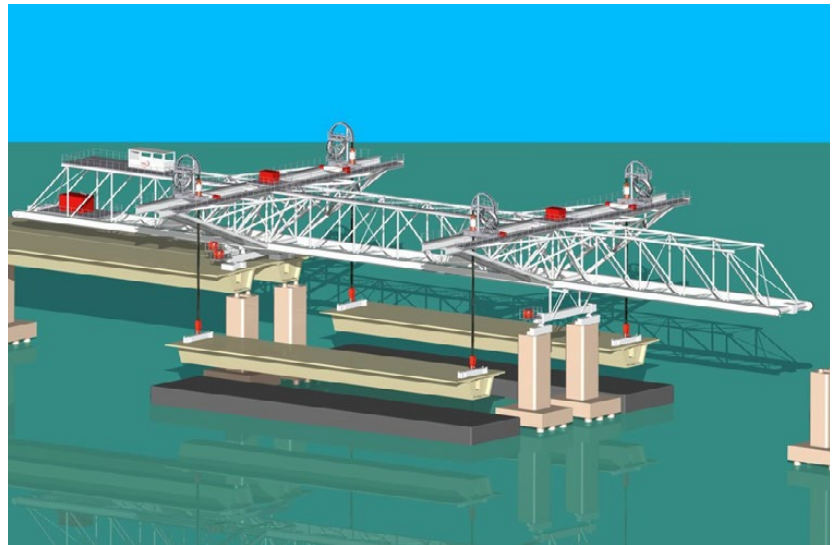
2016

PRODUCT (QTY):

Sonitec Tubes 34,000 linear meters

APPLICATION:

Foundation caissons



Paris Tours Duo

mixed-development towers
180 & 120m



LOCATION:

Paris 13, France

ARCHITECT:

Jean Nouvel Architects

CONSULTANT:

Artelia

CONTRACTORS:

Bateg,
Botte (Foundation)

YEAR/DURATION:

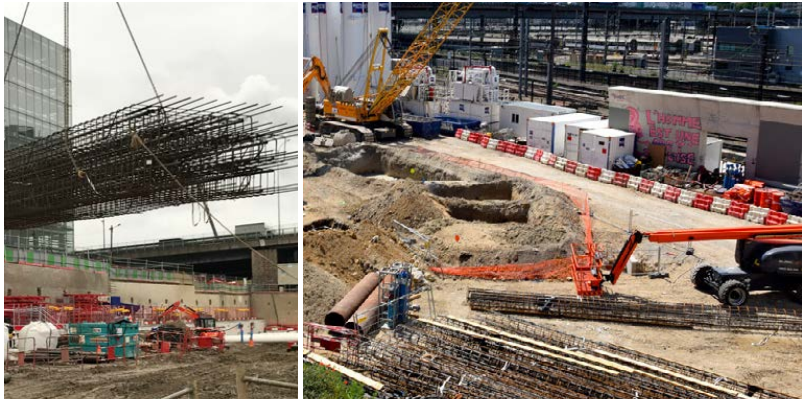
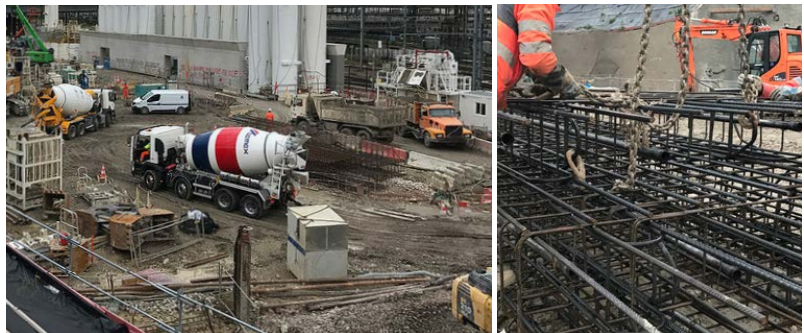
2017

PRODUCT (QTY):

Sonitec Tubes
1,000 linear meters

APPLICATION:

Barrett piles



Ligne TGV Sud

Europe Atlantique



LOCATION:

Tours-Bordeaux,
France

CONSULTANTS:

Vinci Group, Arcadis,
Egis

CONTRACTORS:

Cosea, Vinci Group

YEAR/DURATION:

2011-2015

PRODUCT (QTY):

Sonitec Tubes
18,000 linear meters

APPLICATIONS:

Diaphragm walls,
piling



L&T Mumbai Monorail

Elevated Rail Corridor



LOCATION:

Mumbai, India

CONSULTANT:

Louis Berger (WSP)

CONTRACTOR:

Larsen & Toubro, Ltd.

YEAR/DURATION:

2009-2011

PRODUCT (QTY):

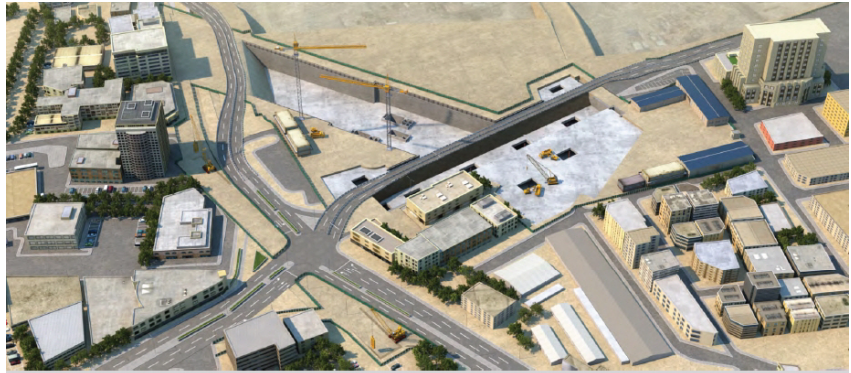
Sonitec Tubes
50,000 linear meters

APPLICATIONS:

Piles, piers and pier caps



Mshereib Station



LOCATION:

Doha, Qatar

OWNER:

Qatar Rail

CONSULTANTS:

Mott MacDonald

CONTRACTORS:

- SOQ JV
- Samsung C&T
- Obrascon Huarte Lain (OHL)
- Qatar Building Company (QBC)

YEAR/DURATION:

2013-2015

PRODUCT (QTY):

Sonitec Tubes 14,000
Sonitec tubes 84,000 linear meters

APPLICATIONS:

Diaphragm wall, caissons, diaphragm wall to slab, temporary, openings piers



Marina Bay Sands

Integrated Resort



LOCATION:

Singapore

CONSULTANTS:

Parsons Brinckerhoff, Arup

CONTRACTORS:

Soletanche-Bachy,
L&M, Sambo

YEAR/DURATION:

2007-2008

PRODUCT (QTY):

Sonitec Tubes 110,000 linear meters

APPLICATIONS:

Diaphragm walls, tunnel, ventilation
building



Delft Tunnel



LOCATION:

Delft, Netherlands

CONSULTANT:

WB Consulting

CONTRACTORS:

Crommelijn - CFE SA - Havertkort
Mill TBI - Infra BV - Dura Vermeer
Group

YEAR/DURATION:

2008-2015

PRODUCT (QTY):

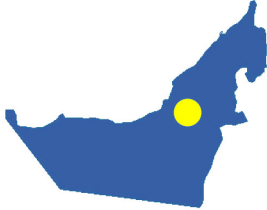
Sonitec Tubes
3,400 linear meters

APPLICATIONS:

Diaphragm walls connections to
slabs



**Dubai International
Airport**



LOCATION:

Dubai, U.A.E.

CONSULTANTS:

ADPI / Dar Al Handasah

CONTRACTORS:

Al Naboodah Civil Engineering, Laing
O'Rourke

YEAR/DURATION:

2003-2005

PRODUCT (QTY):

Sonitec Tubes
1.8 mil linear meters

APPLICATIONS:

Foundation caissons



Sonitec tubes installation

Available Coast to Coast



Foundation Technologies, Inc.

Established in 1986, Foundation Technologies, Inc. is a respected leader in the foundation industry and the pioneer of the rebar centralizer market. Foundation Technologies provides a wide range of products and services to construction professionals in the Federal, heavy civil, industrial, commercial and residential markets. Inside our 94,000-square-foot distribution facility, a dedicated team of professionals provides effective product solutions for a time-sensitive market. Foundation Technologies is proud to be owned and operated by a disabled veteran, certifying our company as a Service-Disabled Veteran Owned Small Business (SDVOSB).

Dextra America

Backed by over 35 years of experience, Dextra America is the manufacturer of Sonitec, the only steel pipe system specifically designed for Crosshole Sonic Logging. Sonitec has been used on some of the largest projects by the world's top contractors including the Dubai International Airport project, the Paris Tour Duo mixed-development towers and the Perth City Rail Link in Perth, Australia. Over 15 million meters (or 50 million feet) of Sonitec CSL tube technology has been used on projects all over the World!

**Foundation
Technologies, Inc.**
FAMILY OF BRANDS

800-773-2368 | 1400 Progress Industrial Blvd. | Lawrenceville, GA 30049 | www.foundationtechnologies.com